

Kelowna Museums Society

alive with our history

Kelowna  
Museums

Alive With Our History



# Kelowna Museums Society

- **Vision**

To be the Okanagan's leader in making the connection between people and places

- **Mission**

To illuminate and strengthen the community's cultures, histories, and possibilities by encouraging personal participation, stimulating curiosity, and engaging the senses

# Board of Directors - 2011

President – Rob Peter – Marketing Consultant

Vice President – David Morris – Consultant

Past President – Bob Groves – Lawyer

Treasurer – Garry Filafilo – Chartered Accountant

## **Directors:**

Howard Hisdal – College Professor

Dale Knowlan – Planning and Development Consultant

Laurie Mills – Human Resources Consultant

Robert Moore – Retired

Tyler Neels – Chartered Accountant

Donna Senese – Professor

Julia Trops – Artist

Frank Truman – Retired

Tom Wolf - Retired

# Staff

Executive Director – Wayne Wilson

Associate Director, Exhibitions & Public Programming – Patti Kilback

Associate Director, Administration & Operations – Debbie Rehm

Associate Director, Collections & Conservation – Tracy Satin

Curator of Education – Shannon Johnson, Michelle Harvey

Education Assistant – Michelle Harvey, Charity

Curatorial Assistant – Keith Boehmer, Jackie Dreger, Jasmine Marshall

Archivist /Registrar – Tara Hurley

Archivist – Donna Johnson

Facility Rental Coordinator – Nikki Valetta

Marketing/Special Events Coordinator – Jacquie Salvino, Lindsay Canning

Visitor Relations Coordinator – Cathy Olson

Visitor Relations Assistant – Sheila Campbell, Freidah Lungo

Facility Maintenance – Jim Jasper, Ken , Kevin Olsen

Wine Shop Associate – Charles Colk, Peter Fearon, Janice Dunn

Wine Shop Assistant – Roger Ward, Amanda Kingma, Mike Lee,

# Kelowna Museums Society – Our History

# Scope of Work

Exhibitions

School Tours

Public Tours

Archives

Collections

Conservation

Special Events

Operations

# Community Reach – Community Impact

## Exhibitions – Okanagan Heritage Museum



# Community Reach – Community Impact Exhibitions – Okanagan Military Museum



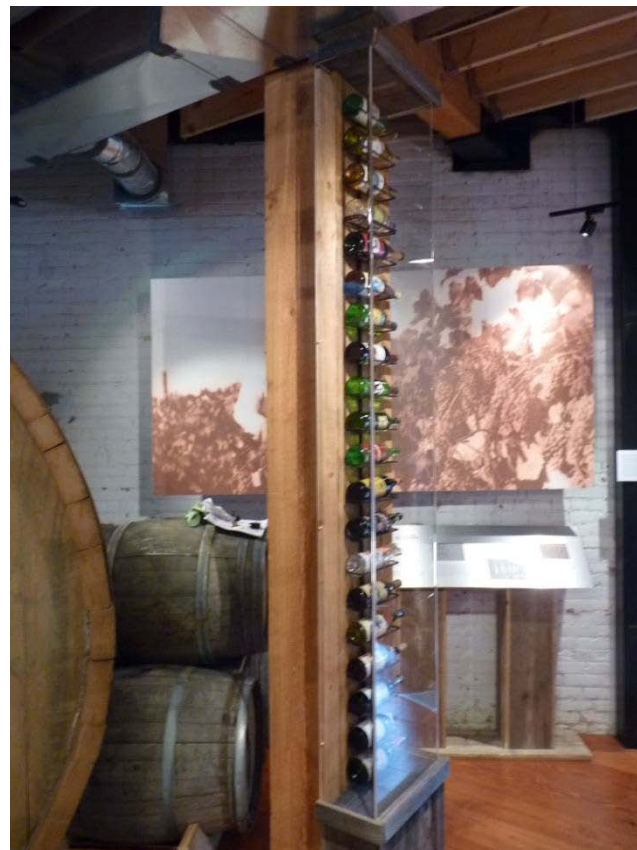


# Community Reach – Community Impact

## Exhibitions – B.C. Orchard Industry Museum



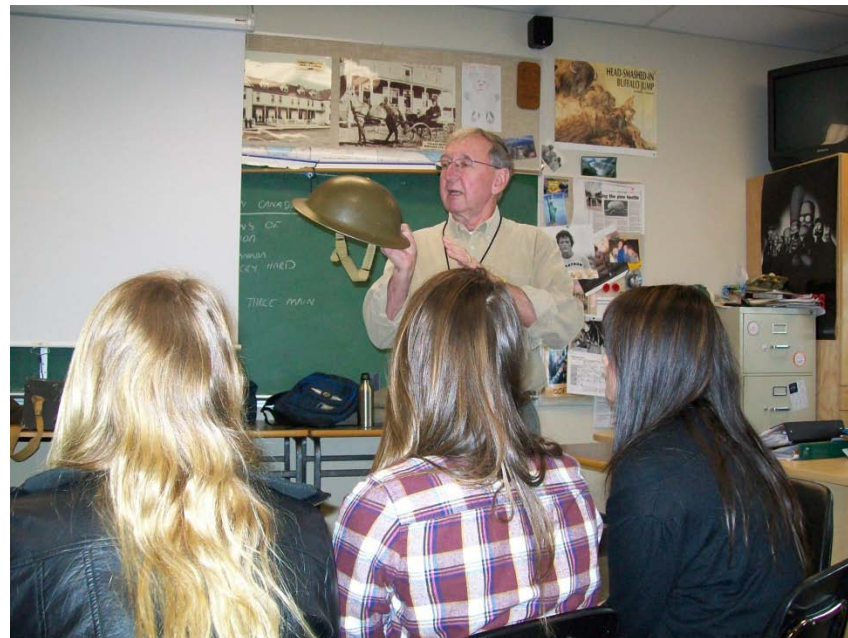
# Community Reach – Community Impact Exhibitions – B. C. Wine Museum



# Community Reach – Community Impact

## Exhibitions – Central Okanagan Sports Hall of Fame Museum

# Community Reach – Community Impact School Tours





# Community Reach – Community Impact Public Programming



# Community Reach – Community Impact Special Events





# Community Reach – Community Impact Special Events



# Community Reach – Community Impact Archival Services





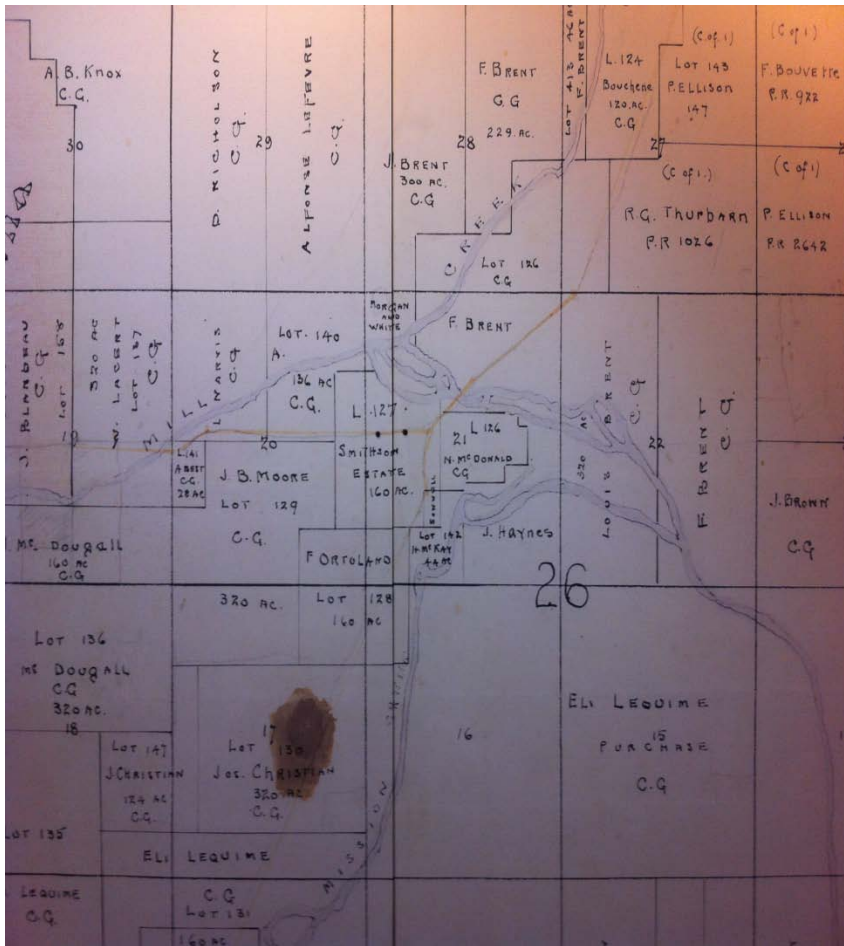
# Community Reach – Community Impact Conservation Services



# Community Reach – Community Impact Collections Development



# Community Reach – Community Impact Corporate Services



- Real Estate
- Government
- Public Agencies
- Business
- Professional
- Tourism
- Agriculture

# Revenue and Expenses



# Laurel Packinghouse

Built – 1917

Community Rental Space

11,200 square feet (main floor)

B.C. Orchard Industry Museum

B. C. Wine Museum & VQA Wine Shop















# Challenges

## Funding

- B. C. Gaming Grants
- B. C. Arts Council
- Community Fundraising

## Expectations

- Community Program Delivery

# The Road Ahead

## Laurel Packinghouse

- Facility Operations
- Laurel Garden

## Central Okanagan Sports Hall of Fame Museum

- Program consolidation
- Induction Ceremony
- Exhibits
- Collections Development

## Business Development

- VQA Wine Shop
- Asset management
- Corporate Services Development

# Achievements

- Conservation Lab Construction (2000)
- Okanagan Heritage Museum renovation (2000)
- Kelowna Museums Society 'Branding'
- Financial Reserve
- Business Planning
- Laurel Packinghouse Restoration (3 Awards)
- Organization Chart
- Heritage Services Provider
- Awards – Exhibits, Publications, Professional
-